

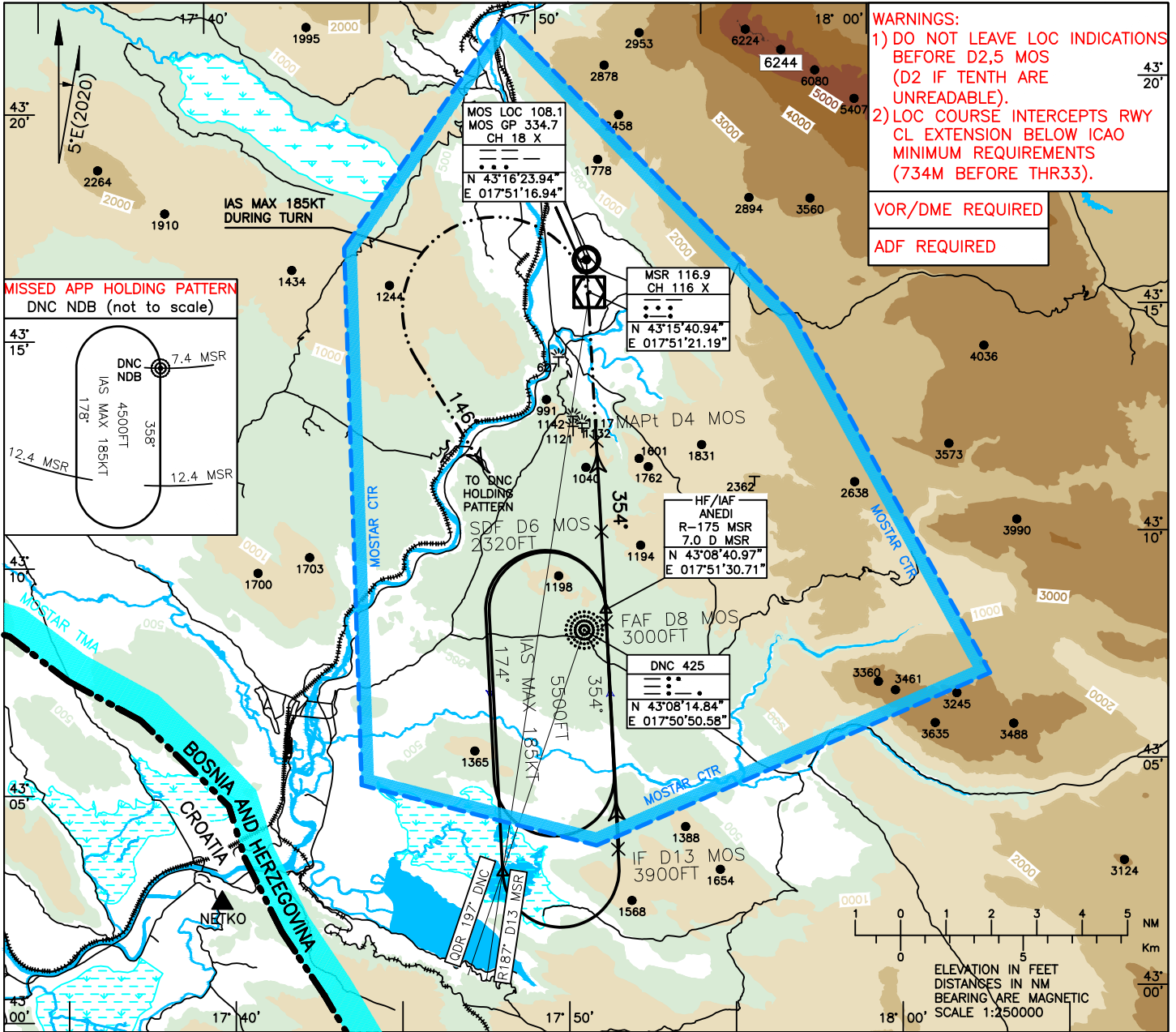
# INSTRUMENT APPROACH CHART-ICAO

AD ELEV 174FT  
HEIGHTS RELATED TO  
FICT. THR ELEV 154FT

TRANSITION ALTITUDE  
10 000FT  
VAR 5°E (2020)

APP 120.225  
129.875  
TWR 125.550  
ATIS 126.225

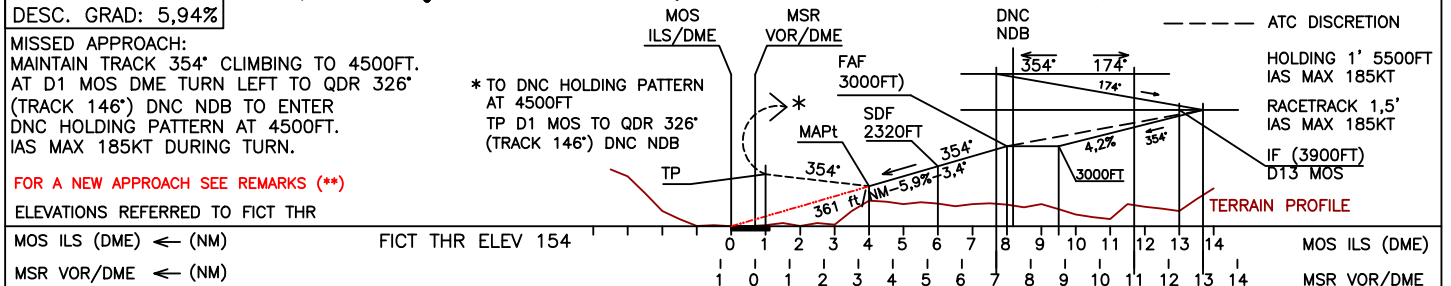
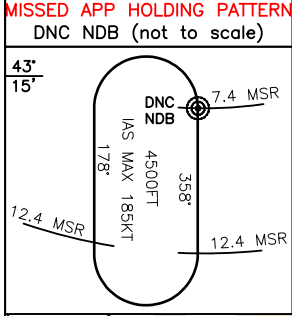
# MOSTAR (LQMO) LOC-Z RWY33 SPECIAL PROCEDURE



**WARNINGS:**  
1) DO NOT LEAVE LOC INDICATIONS BEFORE D2,5 MOS (D2 IF TENTH ARE UNREADABLE).  
2) LOC COURSE INTERCEPTS RWY CL EXTENSION BELOW ICAO MINIMUM REQUIREMENTS (734M BEFORE THR33).

VOR/DME REQUIRED

ADF REQUIRED



CAT.	LOC RWY 33 OCA (H)		GS	FT PER MIN	MOS	DME	ALT (HGT)	REMARKS:	MSA 25NM MSR VOR/DME
	OCA (OCH)								
A	2030 (1876)	1650 (1496)	80	481	8		3000(2846)	1) MOS LOC/GP/DME EQUIPMENTS ARE CO-LOCATED ABOUT 270M EAST FROM THR33. 2) LOC COURSE OFFSET 21° (OUTSIDE ICAO REQUIREMENTS). 3) RWY33 QFU/GEO: 333°/338°.  ** ENTERING ON INBOUND LEG OF DNC NDB HOLDING PATTERN RE-CAPTURE LOC COURSE AS SOON AS POSSIBLE AND DESCEND TO 3000FT BEFORE D8 MOS THEN FOLLOW NOMINAL FINAL APPROACH TRACK FOR LANDING. ATC CLEARANCE NEEDED.	
			90	542	7		2681(2527)		
B			100	602	6	2320(2166)			
C			110	662	5	1959(1805)			
			120	722	4	1598(1444)			
			130	782	3	1237(1083)			
			140	842	2	876(722)			
			150	903	1	515(361)			
			160	963	0	154(0)			

CHG: MAGNETIC BEARINGS;

THIS PAGE INENTIONALY LEFT BLANK